

# Fact Sheet: SNAP Economic Multiplier Effect

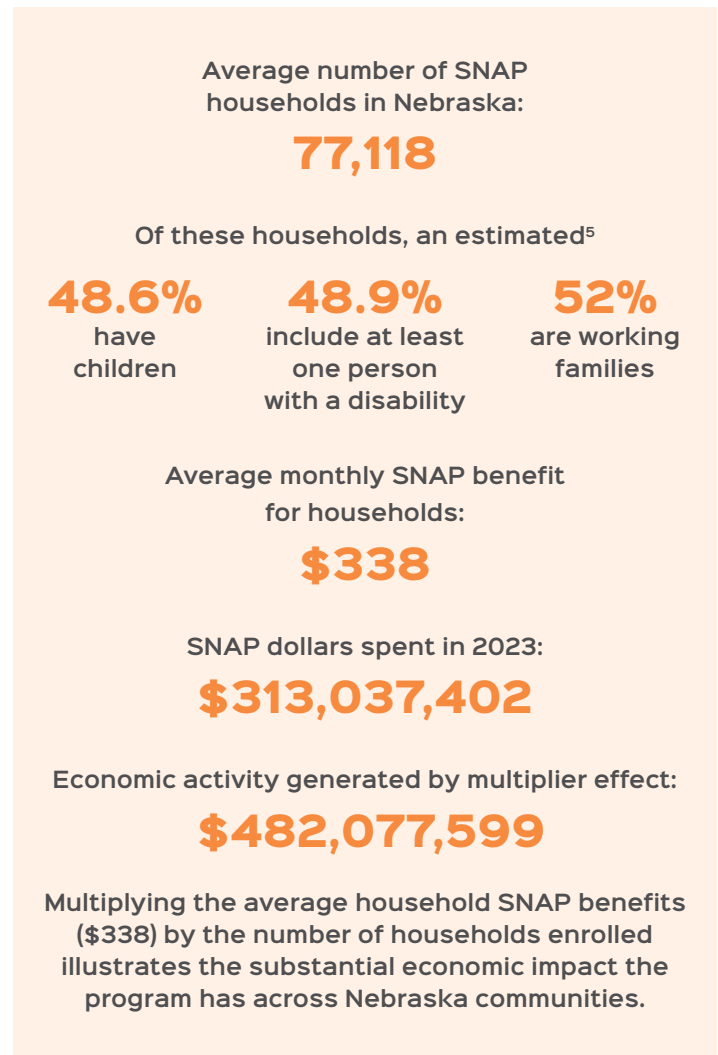
## Introduction

The Supplemental Nutrition Assistance Program (SNAP) helps low-income individuals and families afford nutritious food at authorized retailers. Beyond improving access to food, SNAP stimulates local economies through what is known as the multiplier effect. Economic activity that ripples throughout the community is generated when SNAP benefits are spent at local grocery stores, farmers markets, and other food retailers. This activity supports jobs, services, and businesses tied to food production, distribution, and retail.<sup>1</sup> SNAP benefits cover a portion of food expenses, freeing up household dollars that can be spent on other essential needs, such as housing, transportation, and health care. In this way, SNAP dollars extend beyond just food purchases.

## SNAP and the multiplier effect in Nebraska

In Nebraska, an estimated 8% of households receive SNAP benefits with an average benefit of \$338 per month. SNAP benefits can be used at 1,411 retailers throughout the state—776 of which are in rural communities. These dollars have an impact on the communities where recipients spend their benefits.<sup>2</sup> The U.S. Department of Agriculture (USDA) estimates that for every \$1 in SNAP benefits, \$1.54 in economic activity is generated.<sup>3</sup> Using the most recent data from the USDA, see Figure 1 for how SNAP dollars benefited the state's economy in 2023.<sup>4</sup>

Figure 1. How SNAP dollars benefited Nebraska in 2023



1 Ralston, Katherine, et. al. "SNAP Spending Contributed to Rural Economic Output and Jobs Following the Great Recession." U.S. Department of Agriculture, Economic Research Service, Feb. 15, 2022, [ers.usda.gov/data-products/charts-of-note/chart-detail?chartId=103216](https://ers.usda.gov/data-products/charts-of-note/chart-detail?chartId=103216). Accessed October 2025.

2 "Where Can I Use SNAP EBT." U.S. Department of Agriculture, Food and Nutrition Service, October 2023, [fns.usda.gov/snap/retailer-locator](https://fns.usda.gov/snap/retailer-locator). Accessed October 2025.

3 Canning, Patrick, and Brian Stacy. "The Supplemental Nutrition Assistance Program (SNAP) and the Economy: New Estimates of the SNAP Multiplier." U.S. Department of Agriculture, Economic Research Service, July 2019, [ers.usda.gov/sites/default/files/\\_laserfiche/publications/93529/ERR265\\_Summary.pdf?v=29306](https://ers.usda.gov/sites/default/files/_laserfiche/publications/93529/ERR265_Summary.pdf?v=29306). Accessed October 2025.

4 "SNAP Data Tables, State Level Annual Data." U.S. Department of Agriculture, Food and Nutrition Service, June 2025, [fns.usda.gov/pd/supplemental-nutrition-assistance-program-snap](https://fns.usda.gov/pd/supplemental-nutrition-assistance-program-snap). Accessed October 2025.

5 "American Community Survey 5-Year Estimates Subject Tables: Food Stamps/Supplemental Nutrition Assistance Program (SNAP)." U.S. Census Bureau, 2023, [data.census.gov/table/ACSST5Y2023.S2201?q=snap&g=040XX00US31&d=ACS%205-Year%20Estimates%20Subject%20Tables&moe=false](https://data.census.gov/table/ACSST5Y2023.S2201?q=snap&g=040XX00US31&d=ACS%205-Year%20Estimates%20Subject%20Tables&moe=false). Accessed October 2025.

## Multiplier effect by district

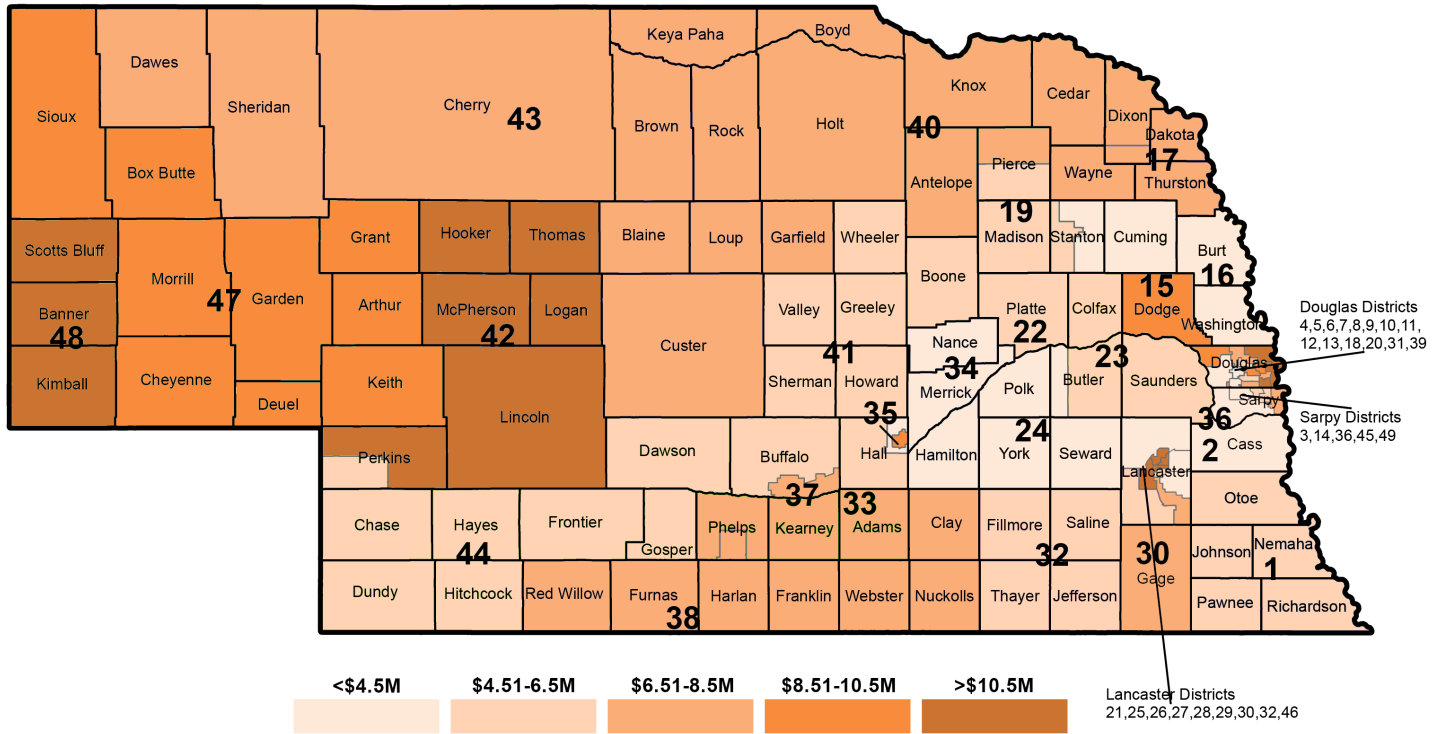
Using the data provided by the USDA and household estimates from the 2023 American Community Survey (ACS), see Table 1 for a breakdown of the SNAP multiplier effect per legislative district in Nebraska.

**Table 1: SNAP multiplier effect by legislative district**

Legislative District	Number of households enrolled in SNAP	Estimated economic impact of SNAP dollars (yearly)	Potential impact of multiplier effect (yearly)	Legislative District	Number of households enrolled in SNAP	Estimated economic impact of SNAP dollars (yearly)	Potential impact of multiplier effect (yearly)
1	1,082	\$4,388,592	\$6,758,432	26	1,894	\$7,682,064	\$11,830,379
2	700	\$2,839,200	\$4,372,368	27	1,818	\$7,373,808	\$11,355,664
3	828	\$3,358,368	\$5,171,887	28	2,561	\$10,387,416	\$15,996,621
4	250	\$1,014,000	\$1,561,560	29	1,021	\$4,141,176	\$6,377,411
5	2,188	\$8,874,528	\$13,666,773	30	1,202	\$4,875,312	\$7,507,980
6	1,123	\$4,554,888	\$7,014,528	31	231	\$936,936	\$1,442,881
7	2,330	\$9,450,480	\$14,553,739	32	1,074	\$4,356,144	\$6,708,462
8	1,731	\$7,020,936	\$10,812,241	33	1,366	\$5,540,496	\$8,532,364
9	1,374	\$5,572,944	\$8,582,334	34	761	\$3,086,616	\$4,753,389
10	1,017	\$4,124,952	\$6,352,426	35	1,697	\$6,883,032	\$10,599,869
11	4,545	\$18,434,520	\$28,389,161	36	218	\$884,208	\$1,361,680
12	1,308	\$5,305,248	\$8,170,082	37	1,264	\$5,126,784	\$7,895,247
13	2,964	\$12,021,984	\$18,513,855	38	1,391	\$5,641,896	\$8,688,520
14	1,031	\$4,181,736	\$6,439,873	39	113	\$458,328	\$705,825
15	1,575	\$6,388,200	\$9,837,828	40	1,119	\$4,538,664	\$6,989,543
16	750	\$3,042,000	\$4,684,680	41	849	\$3,443,544	\$5,303,058
17	1,153	\$4,676,568	\$7,201,915	42	1,913	\$7,759,128	\$11,949,057
18	1,307	\$5,301,192	\$8,163,836	43	1,154	\$4,680,624	\$7,208,161
19	1,054	\$4,275,024	\$6,583,537	44	1,058	\$4,291,248	\$6,608,522
20	1,019	\$4,133,064	\$6,364,919	45	1,242	\$5,037,552	\$7,757,830
21	669	\$2,713,464	\$4,178,735	46	2,319	\$9,405,864	\$14,485,031
22	857	\$3,475,992	\$5,353,028	47	1,485	\$6,023,160	\$9,275,666
23	849	\$3,443,544	\$5,303,058	48	1,991	\$8,075,496	\$12,436,264
24	744	\$3,017,664	\$4,647,203	49	455	\$1,845,480	\$2,842,039
25	283	\$1,147,848	\$1,767,686	<b>Nebraska, total*</b>	<b>77,118</b>	<b>\$313,037,402</b>	<b>\$482,077,599</b>

\*Note the discretion in the number of households and SNAP dollars between the total of all legislative districts from the ACS and USDA SNAP data. The ACS estimates the number of households through survey data while the USDA reports its numbers received directly from the states. The USDA does not provide data from legislative districts.

Figure 2: Potential impact of SNAP multiplier effect (yearly) by legislative district<sup>6</sup>



<sup>6</sup> Nebraska Statewide Legislature by District map provided by nebraskalegislature.gov. Downloaded and altered in December 2025.