

# CENTER *for* RURAL AFFAIRS

2022 CALENDAR & ANNUAL REPORT



# YEAR IN REVIEW

Dear Friends,

As we emerge from the pandemic, we must focus on the urgent challenges our communities face.

With you at our side, we are engaged to create economic opportunity for all, to steward our natural resources, and to build communities where everyone is a full participant in civic and cultural life.

The year ahead will be defined by resiliency, recovery, and a deepened commitment to equity. From economic justice to climate change, the opportunity for transformative change is within our grasp. We invite you to join us on the journey.

Thank you for being part of our work.



Brian Depew  
Executive Director



Executive Director Brian Depew stands in Lyons, Nebraska. The Center's home office is in this small town of 850 people. Brian and the rest of the Center staff are rooted in rural America, living the challenges and values of small towns and the rural way of life.

# YOUR 2021 ACCOMPLISHMENTS

- » Provided one-on-one business counseling to 913 people; 53% were women, 52% Latino, and 77% low- to moderate-income. We empower entrepreneurs with the knowledge and tools they need to succeed.
- » Developed a bill with Nebraska Sen. Tom Brandt to help small processors and livestock producers increase sales to consumers. This bill passed on a 48-0 vote.
- » Continued alternative beehive research with four beekeepers, each with a different type of hive. These hives are smaller and less heavy than commonly used hives, allowing for improved accessibility.
- » Offered 18 multi-session academies, for a total of 73 sessions on construction, child care, restaurants, and cleaning, with 678 participants attending. All of these classes were offered in Spanish.
- » Provided interpretation services at 16 COVID-19 vaccine clinics in three health districts, assisting up to 700 people per week. Our staff members are community leaders Latino families know they can trust.
- » Teamed up with partners to provide 2,277 seedlings to plant in home gardens in Santee Sioux Nation.
- » Launched “Noticias de mi Comunidad,” online videos providing local pandemic news updates in Spanish, to residents of six Nebraska communities.
- » Started work on the 2023 farm bill. This legislation, passed every five years by Congress, impacts all aspects of rural communities, from conservation to rural development.
- » Placed more than \$23 million in loans throughout the history of the Center to strengthen rural communities through entrepreneurship and home ownership. In 2021, we made 59 loans for a total of \$2,153,678.
- » Helped successfully launch the Shell Rock River Watershed Management Coalition in Iowa with 16 member organizations.
- » Advised 38 farmers, including Latinos, military veterans, and women, on farm startup or transition, helping establish more small farms and ranches.
- » Developed a bill in partnership with Sen. Tom Briese to extend the Microenterprise Tax Credit Program for 10 years and increase the size of the credit. This is Nebraska’s only incentive program targeted to businesses with five or fewer full-time employees.
- » Helped rural businesses in need of short-term cash avoid predatory debt with Express Loans of up to \$15,000 offered at responsible interest rates. We provided 30 Express Loans totalling \$301,725 in 2021.
- » Provided inclusive leadership training and coaching to 120 emerging and existing community leaders across Nebraska. This brings more awareness and engagement across cultural divides.
- » Translated COVID-19 notices and advisories for public distribution, helping officials get the word out to community members in three Nebraska health districts.
- » Worked with national lawmakers to draft and introduce the Rural Equal Aid Act, a bill to provide relief to businesses and entities with USDA loans.



# Strengthening Local Food Systems

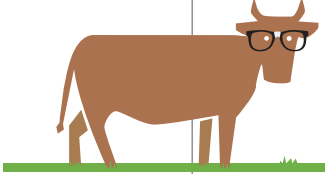
Pandemic disruptions at industrial packing plants caused enormous demand for small lockers like Oakland Meat Processing, pictured. With your support, we helped develop and pass legislation in Nebraska, Iowa, and nationally that makes it easier for farmers to sell directly to consumers and won new funding for local processors.



WE HELPED WIN **\$60 MILLION** IN FEDERAL FUNDING FOR SMALL MEAT PROCESSORS TO UPGRADE OPERATIONS AND BECOME STATE OR FEDERALLY INSPECTED.

# JANUARY 2022

| DECEMBER 2021 |    |    |    |    |    |    | FEBRUARY |    |    |    |    |    |    |
|---------------|----|----|----|----|----|----|----------|----|----|----|----|----|----|
| S             | M  | T  | W  | T  | F  | S  | S        | M  | T  | W  | T  | F  | S  |
|               |    |    | 1  | 2  | 3  | 4  |          |    | 1  | 2  | 3  | 4  | 5  |
| 5             | 6  | 7  | 8  | 9  | 10 | 11 | 6        | 7  | 8  | 9  | 10 | 11 | 12 |
| 12            | 13 | 14 | 15 | 16 | 17 | 18 | 13       | 14 | 15 | 16 | 17 | 18 | 19 |
| 19            | 20 | 21 | 22 | 23 | 24 | 25 | 20       | 21 | 22 | 23 | 24 | 25 | 26 |
| 26            | 27 | 28 | 29 | 30 | 31 |    | 27       | 28 |    |    |    |    |    |

| Sunday             | Monday  | Tuesday  | Wednesday | Thursday  | Friday    | Saturday   |
|--------------------|---|--|-----------|-----------|-----------|--|
|                    |  | <p>Where our food comes from matters. Learn more at <a href="https://cfra.org/food-systems">cfra.org/food-systems</a>.</p> |           |           |           | <b>1</b><br><br>New Year's Day                                       |
| <b>2</b><br><br>●  | <b>3</b>  | <b>4</b>   | <b>5</b>  | <b>6</b>  | <b>7</b>  | <b>8</b>   |
| <b>9</b><br><br>◐  | <b>10</b><br><br>Nat'l Cut Your Energy Costs Day                                  | <b>11</b><br><br>Nat'l Trivia Day—<br>Try tweeting a rural fact to @cfra!  | <b>12</b> | <b>13</b> | <b>14</b> | <b>15</b>  |
| <b>16</b><br><br>● | <b>17</b><br><br>Martin Luther King Jr. Day                                       | <b>18</b>  | <b>19</b> | <b>20</b> | <b>21</b> | <b>22</b>  |
| <b>23</b>          | <b>24</b><br><br>Nat'l Compliment Day—<br>Say something nice about rural America! | <b>25</b><br><br>◑   | <b>26</b> | <b>27</b> | <b>28</b> | <b>29</b><br><br>Nat'l Seed Swap Day—<br>Exchange with your friends! |
| <b>30</b>          | <b>31</b>   | <p>CENTER <i>for</i> RURAL AFFAIRS   CFRA.ORG</p>  |           |           |           |  |

# Small Business Recovery

When rural entrepreneurs stumbled under the burden of the pandemic, the Center offered support. We provided small businesses like Floral Footprints in Laurel, Nebraska, low-interest recovery loans to help sustain their journey.



IN JUST **10 MONTHS**, WE PROVIDED **33 BUSINESSES** WITH **\$1.3 MILLION** IN LOW-INTEREST RECOVERY LOANS.

# FEBRUARY 2022



Apply for a small business or home loan at [cfra.org/lending](http://cfra.org/lending).

| JANUARY |    |    |    |    |    |    | MARCH |    |    |    |    |    |    |
|---------|----|----|----|----|----|----|-------|----|----|----|----|----|----|
| S       | M  | T  | W  | T  | F  | S  | S     | M  | T  | W  | T  | F  | S  |
|         |    |    |    |    |    | 1  |       |    | 1  | 2  | 3  | 4  | 5  |
| 2       | 3  | 4  | 5  | 6  | 7  | 8  | 6     | 7  | 8  | 9  | 10 | 11 | 12 |
| 9       | 10 | 11 | 12 | 13 | 14 | 15 | 13    | 14 | 15 | 16 | 17 | 18 | 19 |
| 16      | 17 | 18 | 19 | 20 | 21 | 22 | 20    | 21 | 22 | 23 | 24 | 25 | 26 |
| 23      | 24 | 25 | 26 | 27 | 28 | 29 | 27    | 28 | 29 | 30 | 31 |    |    |
| 30      | 31 |    |    |    |    |    |       |    |    |    |    |    |    |

| Sunday                      | Monday  | Tuesday | Wednesday     | Thursday  | Friday | Saturday                 |
|-----------------------------|---|---------|---------------|---|--------|--------------------------|
| Black History Month         |   | ● 1     | 2             | 3   | 4      | 5                        |
|                             |   |         | Groundhog Day |   |        |                          |
| 6                           | 7   | ● 8     | 9             | 10  | 11     | 12                       |
|                             | Nat'l Send a Card to a Friend Day—Send rural greetings!                         |         |               |   |        | Lincoln's Birthday       |
| 13                          | 14  | 15      | ● 16          | 17  | 18     | 19                       |
|                             | Valentine's Day—Why do you love rural? Share on social media with #LoveRuralAm. |         |               | Nat'l Random Acts of Kindness Day—What will you do? |        | Nat'l FFA Week (19 - 26) |
| 20                          | 21  | 22      | ● 23          | 24  | 25     | 26                       |
| World Day of Social Justice | Presidents' Day and Washington's Birthday                                       |         |               |   |        |                          |
| 27                          | 28  |         |               |   |        |                          |

CENTER *for* RURAL AFFAIRS | CFRA.ORG

# Standing up for Small Businesses

We champion your voice in Washington, D.C. Women's Business Center Director Jessica Campos testified before Congress last year at a virtual hearing on needed support for rural small businesses and communities.



WITH YOUR HELP,  
**WE WON A FUNDING INCREASE**  
FOR THE RURAL MICROENTERPRISE  
ASSISTANCE PROGRAM FROM  
**\$6 MILLION TO \$8 MILLION.**



# MARCH 2022



Learn more about our efforts at [cfra.org/small-business-policy](https://cfra.org/small-business-policy).

| FEBRUARY |    |    |    |    |    |    | APRIL |    |    |    |    |    |    |
|----------|----|----|----|----|----|----|-------|----|----|----|----|----|----|
| S        | M  | T  | W  | T  | F  | S  | S     | M  | T  | W  | T  | F  | S  |
|          |    | 1  | 2  | 3  | 4  | 5  |       |    |    |    |    | 1  | 2  |
| 6        | 7  | 8  | 9  | 10 | 11 | 12 | 3     | 4  | 5  | 6  | 7  | 8  | 9  |
| 13       | 14 | 15 | 16 | 17 | 18 | 19 | 10    | 11 | 12 | 13 | 14 | 15 | 16 |
| 20       | 21 | 22 | 23 | 24 | 25 | 26 | 17    | 18 | 19 | 20 | 21 | 22 | 23 |
| 27       | 28 | 29 | 30 |    |    |    | 24    | 25 | 26 | 27 | 28 | 29 | 30 |

| Sunday                      | Monday | Tuesday   | Wednesday                              | Thursday   | Friday | Saturday          |
|-----------------------------|--------|---|--|--|--------|-------------------|
|                             |        | 1 ●   | 2                                      | 3  | 4      | 5                 |
| 6                           | 7      | 8   | 9 ◐                                    | 10   | 11     | 12                |
|                             |        | Int'l Women's Day                                     |  |  |        |                   |
| 13                          | 14     | 15  | 16                                     | 17 ●   | 18     | 19                |
| Daylight Saving Time Begins |        |   |  | St. Patrick's Day—Do you have the luck o' the Irish? |        | Nat'l Poultry Day |
| 20                          | 21     | 22  | 23                                     | 24 ◐   | 25     | 26                |
| First Day of Spring         |        | Nat'l Ag Day—Celebrate on social media with #AgDay22. |  |  |        | Nat'l Spinach Day |
| 27                          | 28     | 29  | 30                                     | 31   |        |                   |
|                             |        | Nat'l Mom and Pop Business Owners Day                 | <p>CENTER <i>for</i> RURAL AFFAIRS</p> |  |        | <p>CFRA.ORG</p>   |

# Leading Welcoming Communities

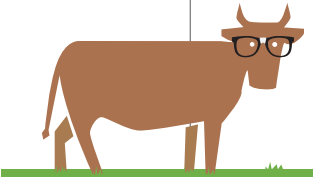
Rural America needs leaders like Yolanda Peck, who helped hundreds of Spanish-speaking people in her community navigate the pandemic and get accurate information about COVID-19. Yolanda passed away in April 2021. She holds a special place in our hearts.



LAST YEAR, WE DISTRIBUTED  
**HAND SANITIZER AND  
2,000 MASKS** AT CHURCHES  
AND FOOD PANTRIES, AND TO  
SMALL BUSINESSES IN  
**4 COMMUNITIES.**

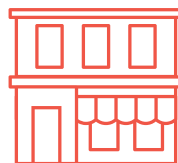
# APRIL 2022

| MARCH |    |    |    |    |    |    | MAY |    |    |    |    |    |    |
|-------|----|----|----|----|----|----|-----|----|----|----|----|----|----|
| S     | M  | T  | W  | T  | F  | S  | S   | M  | T  | W  | T  | F  | S  |
|       |    | 1  | 2  | 3  | 4  | 5  | 1   | 2  | 3  | 4  | 5  | 6  | 7  |
| 6     | 7  | 8  | 9  | 10 | 11 | 12 | 8   | 9  | 10 | 11 | 12 | 13 | 14 |
| 13    | 14 | 15 | 16 | 17 | 18 | 19 | 15  | 16 | 17 | 18 | 19 | 20 | 21 |
| 20    | 21 | 22 | 23 | 24 | 25 | 26 | 22  | 23 | 24 | 25 | 26 | 27 | 28 |
| 27    | 28 | 29 | 30 | 31 |    |    | 29  | 30 | 31 |    |    |    |    |

| Sunday  | Monday | Tuesday                    | Wednesday | Thursday                            | Friday                            | Saturday |
|---|--------|----------------------------|-----------|-------------------------------------|-----------------------------------|----------|
|  <div data-bbox="528 403 959 504" style="border: 1px solid black; padding: 5px; display: inline-block;">                     Our community work is featured at <a href="https://cfra.org/small-towns">cfra.org/small-towns</a>.                 </div> |        |                            |           |                                     | ● 1<br>April Fools' Day           | 2        |
| 3<br><br>Nat'l Library Week (3 - 9)<br>—Visit your local library!   | 4      | 5                          | 6         | 7<br><br>World Health Day           | 8                                 | 9<br>◐   |
| 10<br><br>Nat'l Farm Animals Day  | 11     | 12                         | 13        | 14                                  | 15<br><br>Tax Day                 | 16<br>●  |
| 17<br><br>Easter Sunday and<br>Nat'l Haiku Poetry Day—<br>Can you write one about<br>rural living?  | 18     | 19<br><br>Nat'l Garlic Day | 20        | 21                                  | 22<br><br>Earth Day—Plant a tree! | 23<br>◐  |
| 24  | 25     | 26                         | 27        | 28                                  | 29<br>●                           | 30       |
|   |        |                            |           | CENTER <i>for</i> RURAL AFFAIRS     |                                   | CFRA.ORG |
|   |        |                            |           | Administrative<br>Professionals Day | Arbor Day                         |          |

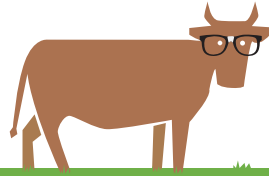
# Navigating the Pandemic

We continue to guide small business owners through the federal assistance process thanks to your support. When federal relief isn't available, we offer grant assistance to entrepreneurs like Alma Sagastume, proprietor of My 15 City in Columbus, Nebraska.



WE GRANTED **\$245,000** TO **112 SMALL BUSINESSES** WHO WERE LEFT OUT OF OTHER RELIEF EFFORTS.

# MAY 2022



Our staff is available for one-on-one business counseling. Call 402.687.2100 or email [wbc@cfra.org](mailto:wbc@cfra.org).

| APRIL |    |    |    |    |    |    | JUNE |    |    |    |    |    |    |
|-------|----|----|----|----|----|----|------|----|----|----|----|----|----|
| S     | M  | T  | W  | T  | F  | S  | S    | M  | T  | W  | T  | F  | S  |
|       |    |    |    |    | 1  | 2  |      |    |    | 1  | 2  | 3  | 4  |
| 3     | 4  | 5  | 6  | 7  | 8  | 9  | 5    | 6  | 7  | 8  | 9  | 10 | 11 |
| 10    | 11 | 12 | 13 | 14 | 15 | 16 | 12   | 13 | 14 | 15 | 16 | 17 | 18 |
| 17    | 18 | 19 | 20 | 21 | 22 | 23 | 19   | 20 | 21 | 22 | 23 | 24 | 25 |
| 24    | 25 | 26 | 27 | 28 | 29 | 30 | 26   | 27 | 28 | 29 | 30 |    |    |

| Sunday  | Monday | Tuesday | Wednesday | Thursday               | Friday | Saturday                   |
|---|--------|---------|-----------|------------------------|--------|----------------------------|
| 1<br><br>May Day and<br>Nat'l Small Business Week<br>(1 - 7) #DreamSmallBiz | 2      | 3       | 4         | 5<br><br>Cinco de Mayo | 6      | 7                          |
| 8<br><br>Mother's Day   | 9      | 10      | 11        | 12                     | 13     | 14                         |
| 15  | 16     | 17      | 18        | 19                     | 20     | 21<br><br>Armed Forces Day |
| 22  | 23     | 24      | 25        | 26                     | 27     | 28                         |
| 29<br><br>Memorial Day  | 30     | 31      |           |                        |        |                            |

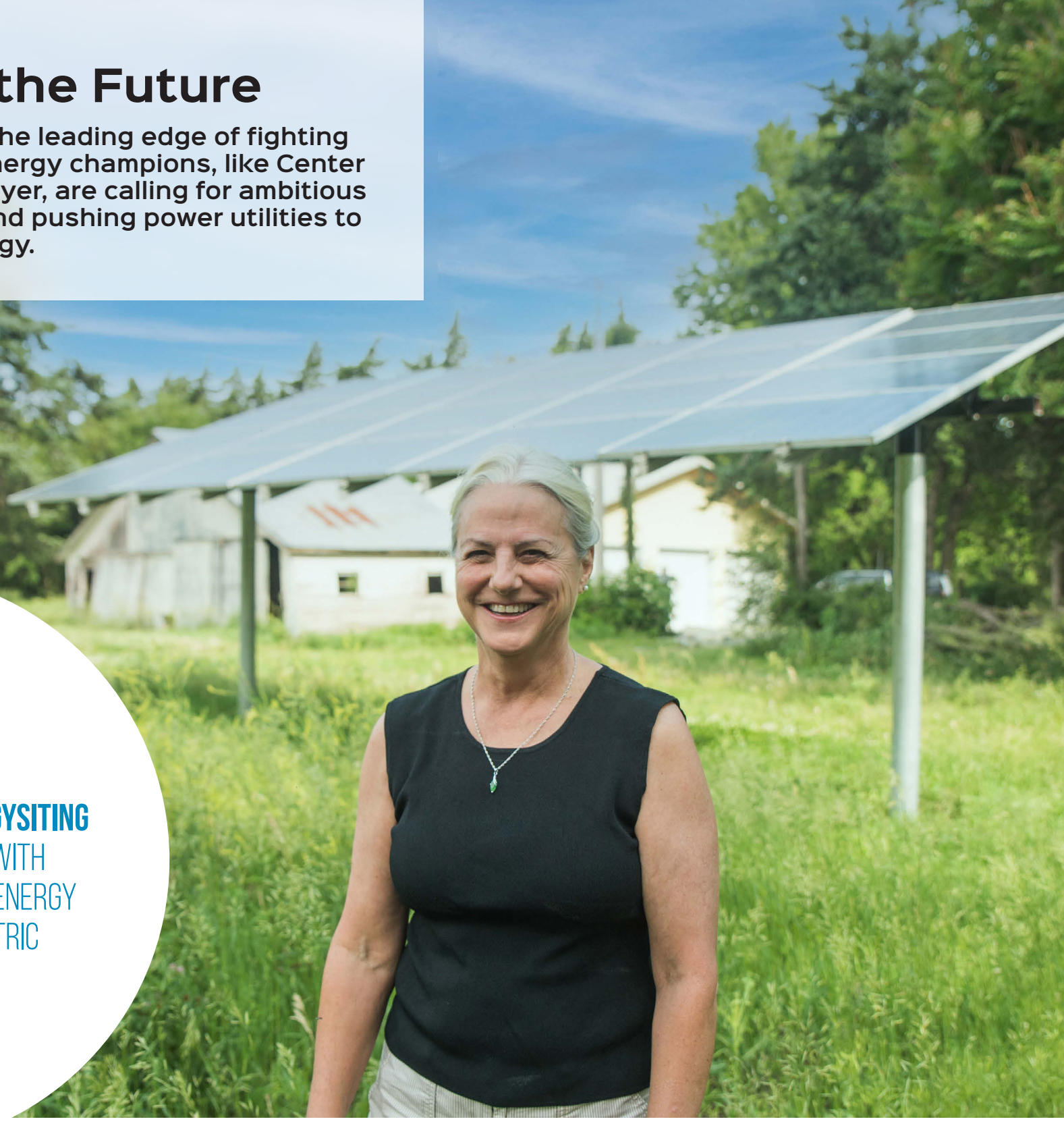
CENTER *for* RURAL AFFAIRS | [CFRA.ORG](http://CFRA.ORG)

# Brightening the Future

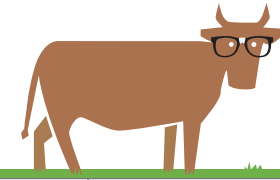
Rural Americans are on the leading edge of fighting climate change. Clean energy champions, like Center Board Member Nancy Meyer, are calling for ambitious decarbonization goals and pushing power utilities to invest in renewable energy.



VISIT [CFRA.ORG/CLEANENERGYSITING](https://www.cfra.org/cleanenergysiting)  
FOR A LIBRARY STOCKED WITH  
RESOURCES ON RENEWABLE ENERGY  
DEVELOPMENT AND ELECTRIC  
TRANSMISSION SITING.



# JUNE 2022



Learn more at [cfra.org/clean-energy](https://cfra.org/clean-energy).

| MAY |    |    |    |    |    |    | JULY |    |    |    |    |    |    |
|-----|----|----|----|----|----|----|------|----|----|----|----|----|----|
| S   | M  | T  | W  | T  | F  | S  | S    | M  | T  | W  | T  | F  | S  |
| 1   | 2  | 3  | 4  | 5  | 6  | 7  |      |    |    |    |    | 1  | 2  |
| 8   | 9  | 10 | 11 | 12 | 13 | 14 | 3    | 4  | 5  | 6  | 7  | 8  | 9  |
| 15  | 16 | 17 | 18 | 19 | 20 | 21 | 10   | 11 | 12 | 13 | 14 | 15 | 16 |
| 22  | 23 | 24 | 25 | 26 | 27 | 28 | 17   | 18 | 19 | 20 | 21 | 22 | 23 |
| 29  | 30 | 31 |    |    |    |    | 24   | 25 | 26 | 27 | 28 | 29 | 30 |
|     |    |    |    |    |    |    | 31   |    |    |    |    |    |    |

| Sunday  | Monday   | Tuesday             | Wednesday       | Thursday | Friday | Saturday |
|---|--|---------------------|-----------------|----------|--------|----------|
|   |  |                     | 1               | 2        | 3      | 4        |
| 5   | 6  | 7                   | 8               | 9        | 10     | 11       |
| 12  | 13   | 14                  | 15              | 16       | 17     | 18       |
|   | Nat'l Weed Your Garden Day—Stay in control of your garden this year. | Flag Day            | Global Wind Day |          |        |          |
| 19  | 20   | 21                  | 22              | 23       | 24     | 25       |
| Father's Day & Juneteenth                         |  | First Day of Summer |                 |          |        |          |
| 26  | 27   | 28                  | 29              | 30       |        |          |
| <p>CENTER <i>for</i> RURAL AFFAIRS   CFRA.ORG</p> |  |                     |                 |          |        |          |

# Growing Abundant Produce

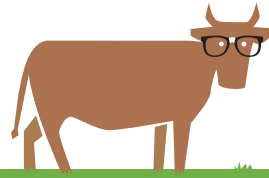
High school sophomore Donovan Hastings and teacher Delberta Frazier helped grow fresh food for their neighbors in this 7-acre community garden near UMÓ<sup>n</sup>HO<sup>n</sup> (Omaha) Nation Public School. Your support made this educational garden in Macy, Nebraska, possible.



LAST YEAR, WE ASSISTED UMÓ<sup>n</sup>HO<sup>n</sup> AND SANTEE SIOUX NATION COMMUNITY MEMBERS WITH GARDEN SETUP AND ADVISING, FOR A TOTAL OF **216 FAMILY GARDENS**.



# JULY 2022



Visit [cfra.org/native-communities](https://cfra.org/native-communities) for more information.

| JUNE |    |    |    |    |    |    | AUGUST |    |    |    |    |    |    |   |
|------|----|----|----|----|----|----|--------|----|----|----|----|----|----|---|
| S    | M  | T  | W  | T  | F  | S  | S      | M  | T  | W  | T  | F  | S  |   |
|      |    |    | 1  | 2  | 3  | 4  |        |    | 1  | 2  | 3  | 4  | 5  | 6 |
| 5    | 6  | 7  | 8  | 9  | 10 | 11 | 7      | 8  | 9  | 10 | 11 | 12 | 13 |   |
| 12   | 13 | 14 | 15 | 16 | 17 | 18 | 14     | 15 | 16 | 17 | 18 | 19 | 20 |   |
| 19   | 20 | 21 | 22 | 23 | 24 | 25 | 21     | 22 | 23 | 24 | 25 | 26 | 27 |   |
| 26   | 27 | 28 | 29 | 30 |    |    | 28     | 29 | 30 | 31 |    |    |    |   |

| Sunday             | Monday                | Tuesday | Wednesday | Thursday | Friday | Saturday                      |
|--------------------|-----------------------|---------|-----------|----------|--------|-------------------------------|
|                    |                       |         |           |          | 1      | 2                             |
| 3                  | 4<br>Independence Day | 5       | 6         | 7        | 8      | 9                             |
| 10                 | 11                    | 12      | 13        | 14       | 15     | 16                            |
| 17                 | 18                    | 19      | 20        | 21       | 22     | 23                            |
| 24                 | 25                    | 26      | 27        | 28       | 29     | 30<br>Nat'l Day of the Cowboy |
| 31<br>Parents' Day |                       |         |           |          |        |                               |

CENTER *for* RURAL AFFAIRS | CFRA.ORG

# Advancing On-Farm Conservation

Iowans are working to advance conservation and protect water quality. Landowner Lee Tesdell and his farm operator Mike Helland hosted a field day, pictured, with tours of saturated buffers and demonstrations of drones seeding cover crops.



CHECK OUT RESOURCES TO HELP FARMERS  
AND RANCHERS IMPLEMENT CONSERVATION  
PRACTICES AT [CFRA.ORG/CONSERVATION](https://www.cfra.org/conservation).



# AUGUST 2022



To learn more about our conservation efforts in the 2023 farm bill, visit [cfra.org/farm-bill](https://cfra.org/farm-bill).

| JULY |    |    |    |    |    |    | SEPTEMBER |    |    |    |    |    |    |
|------|----|----|----|----|----|----|-----------|----|----|----|----|----|----|
| S    | M  | T  | W  | T  | F  | S  | S         | M  | T  | W  | T  | F  | S  |
|      |    |    |    |    | 1  | 2  |           |    |    |    | 1  | 2  | 3  |
| 3    | 4  | 5  | 6  | 7  | 8  | 9  | 4         | 5  | 6  | 7  | 8  | 9  | 10 |
| 10   | 11 | 12 | 13 | 14 | 15 | 16 | 11        | 12 | 13 | 14 | 15 | 16 | 17 |
| 17   | 18 | 19 | 20 | 21 | 22 | 23 | 18        | 19 | 20 | 21 | 22 | 23 | 24 |
| 24   | 25 | 26 | 27 | 28 | 29 | 30 | 25        | 26 | 27 | 28 | 29 | 30 |    |
| 31   |    |    |    |    |    |    |           |    |    |    |    |    |    |

| Sunday   | Monday  | Tuesday                    | Wednesday                 | Thursday | Friday               | Saturday |
|--|---|----------------------------|---------------------------|----------|----------------------|----------|
|  | 1   | 2                          | 3<br>Nat'l Watermelon Day | 4        | 5                    | 6        |
| 7<br>Nat'l Farmers Market Week (7 - 13)—Visit your community market for fresh produce and locally-made products! | 8<br>Nat'l Sneak Some Zucchini Onto Your Neighbor's Porch Day—Need we say more? | 9<br>Nat'l Book Lovers Day | 10                        | 11       | 12                   | 13       |
| 14   | 15  | 16                         | 17                        | 18       | 19                   | 20       |
| 21   | 22  | 23                         | 24                        | 25       | 26                   | 27       |
|  |   |                            |                           |          | Women's Equality Day |          |
| 28   | 29  | 30                         | 31                        |          |                      |          |

CENTER *for* RURAL AFFAIRS | CFRA.ORG

# Creating Opportunity

We continue to expand bilingual services to meet community needs, thanks to your support. Our Spanish-language business workshops, coaching, and lending services provide opportunity for entrepreneurs like Veronica Ramos of Blossom Beauty Salon in Grand Island, Nebraska.




LAST YEAR, WE PROVIDED  
**26 LOANS** TOTTALLING  
**\$1,047,281** TO LATINO  
ENTREPRENEURS.



# SEPTEMBER 2022

| AUGUST |    |    |    |    |    |    | OCTOBER |    |    |    |    |    |    |
|--------|----|----|----|----|----|----|---------|----|----|----|----|----|----|
| S      | M  | T  | W  | T  | F  | S  | S       | M  | T  | W  | T  | F  | S  |
| 1      | 2  | 3  | 4  | 5  | 6  |    |         |    |    |    |    |    | 1  |
| 7      | 8  | 9  | 10 | 11 | 12 | 13 | 2       | 3  | 4  | 5  | 6  | 7  | 8  |
| 14     | 15 | 16 | 17 | 18 | 19 | 20 | 9       | 10 | 11 | 12 | 13 | 14 | 15 |
| 21     | 22 | 23 | 24 | 25 | 26 | 27 | 16      | 17 | 18 | 19 | 20 | 21 | 22 |
| 28     | 29 | 30 | 31 |    |    |    | 23      | 24 | 25 | 26 | 27 | 28 | 29 |
|        |    |    |    |    |    |    | 30      | 31 |    |    |    |    |    |

| Sunday  | Monday   | Tuesday | Wednesday              | Thursday  | Friday                 | Saturday        |
|---|--|---------|------------------------|---|------------------------|-----------------|
|  <p>Visit <a href="https://cfra.org/entrepreneur-community-coaching-network">cfra.org/entrepreneur-community-coaching-network</a> to check out a networking opportunity in Nebraska.</p> |  |         |                        | 1   | 2                      | 3               |
| 4   | 5  | 6       | 7                      | 8   | 9                      | 10              |
|   | Labor Day and Center for Rural Affairs founded on this day in 1973 |         | Nat'l Acorn Squash Day |   | Stand Up to Cancer Day |                 |
| 11  | 12   | 13      | 14                     | 15  | 16                     | 17              |
| Patriot Day and Grandparents' Day   |  |         |                        |   |                        |                 |
| 18  | 19   | 20      | 21                     | 22  | 23                     | 24              |
| Nat'l Farm Safety & Health Week (18 - 24)   | Talk Like a Pirate Day—Celebrate RRRural Amerrrica!                |         |                        | First Day of Autumn—Take a drive through rural America to find fall colors! |                        |                 |
| 25  | 26   | 27      | 28                     | 29  | 30                     |                 |
| Rosh Hashanah (25 - 27)   |  |         |                        |   |                        |                 |
| <p>CENTER <i>for</i> RURAL AFFAIRS</p>  |  |         |                        |   |                        | <p>CFRA.ORG</p> |

# Adding Veggies to School Lunch Trays

Students across the country are growing fresh, delicious food in school greenhouses. We provided direct support to 10 schools, including North Bend Central, pictured, where students harvested vegetables for their cafeteria to turn into nutritious lunches.

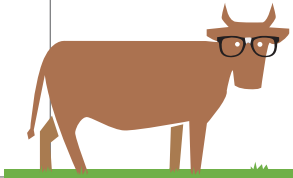


WE RECOGNIZED NEBRASKA CHRISTIAN SCHOOLS AS AN **OUTSTANDING GREENHOUSE** TO CAFETERIA SCHOOL IN 2021.



# OCTOBER 2022

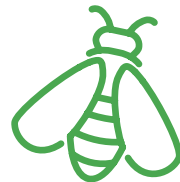
| SEPTEMBER |    |    |    |    |    |    | NOVEMBER |    |    |    |    |    |    |
|-----------|----|----|----|----|----|----|----------|----|----|----|----|----|----|
| S         | M  | T  | W  | T  | F  | S  | S        | M  | T  | W  | T  | F  | S  |
|           |    |    | 1  | 2  | 3  |    |          |    | 1  | 2  | 3  | 4  | 5  |
| 4         | 5  | 6  | 7  | 8  | 9  | 10 | 6        | 7  | 8  | 9  | 10 | 11 | 12 |
| 11        | 12 | 13 | 14 | 15 | 16 | 17 | 13       | 14 | 15 | 16 | 17 | 18 | 19 |
| 18        | 19 | 20 | 21 | 22 | 23 | 24 | 20       | 21 | 22 | 23 | 24 | 25 | 26 |
| 25        | 26 | 27 | 28 | 29 | 30 |    | 27       | 28 | 29 | 30 |    |    |    |

| Sunday     | Monday  | Tuesday   | Wednesday   | Thursday | Friday | Saturday |
|------------|---|---|---|----------|--------|----------|
|            |  | <div style="border: 1px solid black; padding: 5px; display: inline-block;">           Learn more at <a href="https://cfra.org/f2s">cfra.org/f2s</a>.         </div> |   |          |        | 1        |
| 2          | 3   | 4   | 5   | 6        | 7      | 8        |
|            |   | Yom Kippur (4 - 5)  |   |          |        |          |
| 9          | 10  | 11  | 12  | 13       | 14     | 15       |
|            | Indigenous Peoples' Day   |   | Nat'l Farmer's Day—<br>#ThankAFarmer on social media. |          |        |          |
| 16         | 17  | 18  | 19  | 20       | 21     | 22       |
| Boss's Day |   |   |   |          |        |          |
| 23         | 24  | 25  | 26  | 27       | 28     | 29       |
|            |   |   | Nat'l Pumpkin Day                                     |          |        |          |
| 30         | 31  |   |   |          |        |          |
| Halloween  |   |   |   |          |        |          |

CENTER *for* RURAL AFFAIRS | CFRA.ORG

# Training in Agriculture

The Center honors military veterans and thanks them for their service. To give back, we offer an agricultural training and networking program, pictured, tailored to their needs. The 2021 cohort met monthly for classes offered both online and in person.



**OTHER AGRICULTURAL EVENTS** HOSTED BY THE CENTER  
FOCUS ON BEEKEEPING, EXPLORING FARMING, AND ARE  
**OFFERED IN BOTH SPANISH AND ENGLISH.**



# NOVEMBER 2022



More information and a full listing of events can be found at [cfra.org/events](https://cfra.org/events).

| OCTOBER |    |    |    |    |    |    | DECEMBER |    |    |    |    |    |    |   |
|---------|----|----|----|----|----|----|----------|----|----|----|----|----|----|---|
| S       | M  | T  | W  | T  | F  | S  | S        | M  | T  | W  | T  | F  | S  |   |
|         |    |    |    |    |    | 1  |          |    |    |    |    | 1  | 2  | 3 |
| 2       | 3  | 4  | 5  | 6  | 7  | 8  | 4        | 5  | 6  | 7  | 8  | 9  | 10 |   |
| 9       | 10 | 11 | 12 | 13 | 14 | 15 | 11       | 12 | 13 | 14 | 15 | 16 | 17 |   |
| 16      | 17 | 18 | 19 | 20 | 21 | 22 | 18       | 19 | 20 | 21 | 22 | 23 | 24 |   |
| 23      | 24 | 25 | 26 | 27 | 28 | 29 | 25       | 26 | 27 | 28 | 29 | 30 | 31 |   |
| 30      | 31 |    |    |    |    |    |          |    |    |    |    |    |    |   |

| Sunday                                  | Monday | Tuesday                                       | Wednesday          | Thursday         | Friday   | Saturday  |
|---|--------|---|--------------------|------------------|--|---|
| National Native American Heritage Month |        | 1   | 2                  | 3                | 4  | 5   |
|   |        |   | Dia de los Muertos |                  |  |   |
| 6                                       | 7      | 8   | 9                  | 10               | 11   | 12  |
| Daylight Saving Time Ends               |        | Election Day—<br>Get out and vote!            |                    |                  | Veterans Day—Thank you to all who have served! |   |
| 13                                      | 14     | 15  | 16                 | 17               | 18   | 19  |
|   |        | Philanthropy Day                              |                    |                  |  |   |
| 20                                      | 21     | 22  | 23                 | 24               | 25   | 26  |
|   |        |   |                    | Thanksgiving Day | Native American Heritage Day                   | Small Business Saturday—What's your favorite rural business? #ShopSmall |
| 27                                      | 28     | 29  | 30                 |                  |  |   |
|   |        | Giving Tuesday—<br>Make a gift to the Center! |                    |                  |  |   |

CENTER *for* RURAL AFFAIRS | CFRA.ORG

# Supporting Home Ownership

Rural Americans should have access to safe, quality housing. We launched a new home lending program to help our neighbors overcome financial barriers. Josie Vitosh, pictured at her new house in Odell, Nebraska, received a home loan.



**CENTER HOME LOANS**  
CAN BE USED FOR PURCHASE,  
OWNER-OCCUPIED  
REHABILITATION, RENOVATION,  
OR EMERGENCY REPAIR.



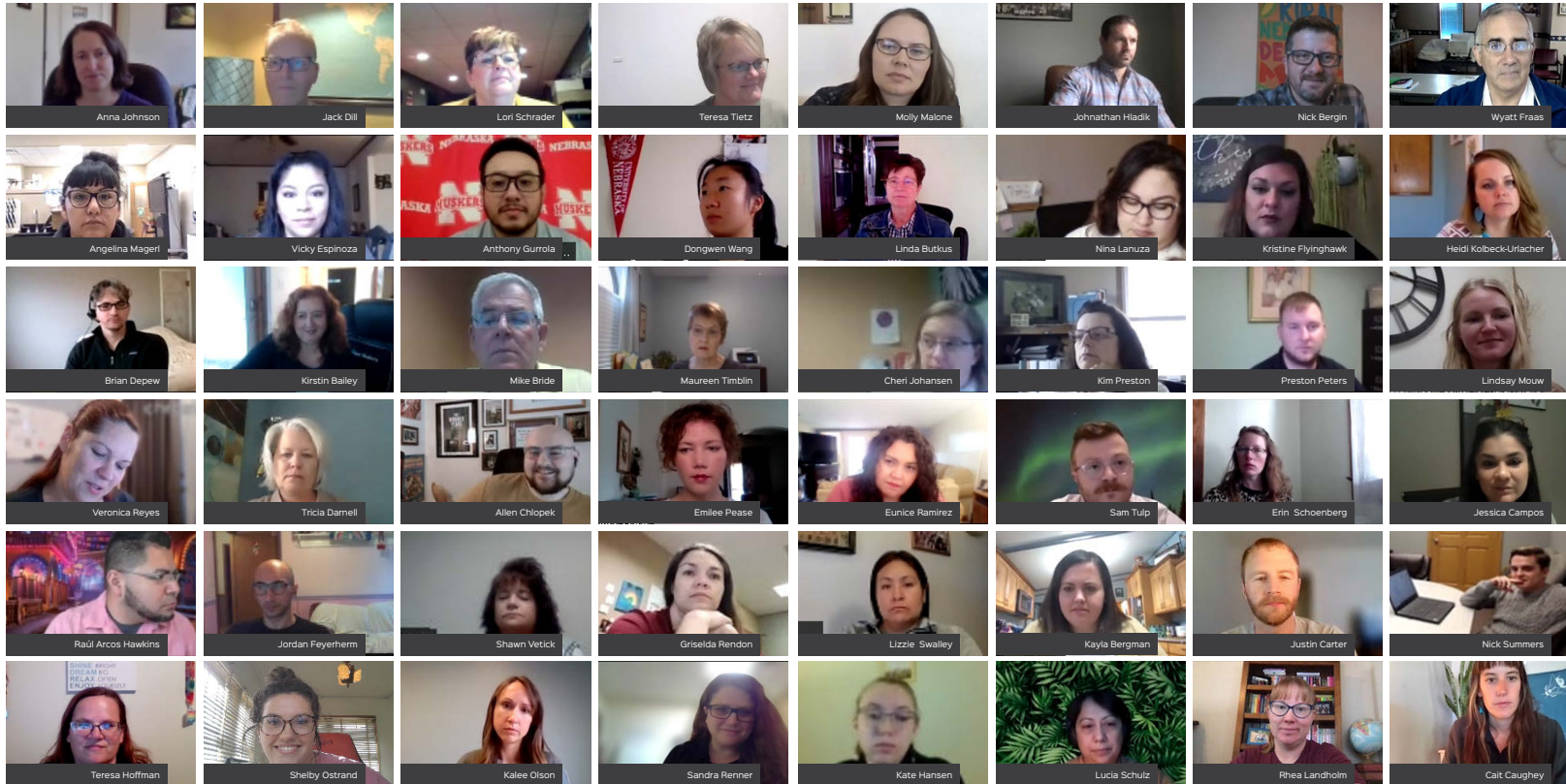
# DECEMBER 2022

| NOVEMBER |    |    |    |    |    |    | JANUARY 2023 |    |    |    |    |    |    |
|----------|----|----|----|----|----|----|--------------|----|----|----|----|----|----|
| S        | M  | T  | W  | T  | F  | S  | S            | M  | T  | W  | T  | F  | S  |
|          | 1  | 2  | 3  | 4  | 5  |    | 1            | 2  | 3  | 4  | 5  | 6  | 7  |
| 6        | 7  | 8  | 9  | 10 | 11 | 12 | 8            | 9  | 10 | 11 | 12 | 13 | 14 |
| 13       | 14 | 15 | 16 | 17 | 18 | 19 | 15           | 16 | 17 | 18 | 19 | 20 | 21 |
| 20       | 21 | 22 | 23 | 24 | 25 | 26 | 22           | 23 | 24 | 25 | 26 | 27 | 28 |
| 27       | 28 | 29 | 30 |    |    |    | 29           | 30 | 31 |    |    |    |    |

| Sunday   | Monday | Tuesday | Wednesday                    | Thursday | Friday | Saturday         |
|--|--------|---------|------------------------------|----------|--------|------------------|
|  |        |         |                              | 1        | 2      | 3                |
|  <div data-bbox="334 406 909 478" style="border: 1px solid black; padding: 5px; display: inline-block;">                     Apply for a home loan at <a href="https://cfra.org/homeloans">cfra.org/homeloans</a>.                 </div> |        |         |                              |          |        |                  |
| 4  | 5      | 6       | 7                            | 8        | 9      | 10               |
|  |        |         | Pearl Harbor Remembrance Day |          |        | Human Rights Day |
| 11   | 12     | 13      | 14                           | 15       | 16     | 17               |
|  |        |         |                              |          |        |                  |
| 18   | 19     | 20      | 21                           | 22       | 23     | 24               |
| Hanukkah (18 - 26)   |        |         | First Day of Winter          |          |        | Christmas Eve    |
| 25   | 26     | 27      | 28                           | 29       | 30     | 31               |
| Christmas  |        |         |                              |          |        | New Year's Eve   |
| CENTER <i>for</i> RURAL AFFAIRS  |        |         |                              |          |        | CFRA.ORG         |

# Our Dedicated Board and Staff

The Center's staff and Board, pictured, overcame pandemic barriers to build a better future for rural people. With you as our partner, we advanced the Center's work in new ways. Center Board and staff span four states: Nebraska, Iowa, Minnesota, and South Dakota. Our main office is in Lyons, Nebraska, with satellite offices in Grand Island, Hartington, Imperial, Lincoln, Schuyler, and Scottsbluff, Nebraska; and Nevada, Iowa.



Thank you 2021 Board members:

- Krista Dittman, President
- Dennis Demmel, Vice President
- Jay Hall, Secretary
- Chuck Karpf, Treasurer
- Laverne Barrett, Executive Committee
- Melissa Florell, Executive Committee
- Barbara Dilly
- Greg Fripp
- Ross Larson
- Keith Mahaney
- Amanda McKinney
- Nancy Meyer
- Karina Perez
- Paul Swanson
- Jane Yule
- Bob Warrick, Director Emeritus
- Clark Nichols, Director Emeritus
- Don Reeves, Director Emeritus

This calendar illustrates the impact you helped achieve during the past year. We appreciate your commitment to creating vibrant family farms and ranches, small businesses, and communities. Thank you from the staff and board of the Center for Rural Affairs.



CENTER for  
RURAL AFFAIRS

145 MAIN STREET, PO BOX 236 | LYONS, NE 68038 | 402.687.2100

For our latest financial and donor information, please visit [cfa.org](http://cfa.org).  
The Center for Rural Affairs is an equal opportunity employer and provider.